

# Curriculum Review Services

Melita Higher Education  
A Division of Melita Publishing Consultants





**“Education is the most powerful weapon which you can use to change the world.”**

**-- Nelson Mandela**

## Improving science education is essential to ensuring that the global community can meet the growing set of technological and environmental challenges we all face

Successful science education programs require well-designed curriculum, tailored to national and regional development goals. At Melita Higher Education, the education division of Nature Publishing Group (NPG), we are dedicated to developing a broad suite of innovative educational resources to support institutions, instructors, students, learned societies and lifelong learners in their quests to contribute to the world of science.

A well-designed curriculum is crucial in supporting the aims of top class international educational institutions. Melita Higher Education is able to leverage substantial scientific expertise and educational specialists to offer high quality independent curriculum review services because we know:

- Your reputation matters, globally
- You want to increase the quality and quantity of students applying to your institution
- You want your graduates to have successful careers
- You want to provide for personal development and assessment of both teachers and students
- You want programs that are sustainable and efficient to run
- You need to attract funding and use it wisely.



**A review encourages re-design of the curriculum and its delivery with employability in mind**

## Achieving effective science education begins with a systematic analysis of the gaps between current systems and desired outcomes

Curriculum reviews provide a systematic method for acquiring accurate and broad-based internal and external feedback regarding the relevancy and organization of a program's curriculum. They provide verifiable evidence for significant change within a program when change is appropriate.

The act of conducting a review encourages strategic thinking among faculty and provides a mechanism for alignment with national and regional educational policy and goals. It also provides a means of initiating discussion of the employability issue, critical to today's high performing institutions.

The review process provides space for reflection, and an overall view that may often be missing from day-to-day schedules. In a complete curriculum review, faculty consult with our expert professionals in the field at a level of complexity not always possible in regular advisory committee meetings.

A review conducted by Melita Higher Education's team of external expert professionals provides an objective

platform for sector, institutional and departmental requirements to be taken into account.

You gain a comprehensive program overview identifying strengths and weaknesses and any gaps in provision including the identification of how and where employability-related learning is currently incorporated into curricula.

The findings and recommendations are supported by objective data, which can then be used for prioritizing curricular needs.

Curriculum reviews can provide substantiated evidence for change, they should be held whenever a department wishes to make significant changes or improvements to the program direction and/or program courses.

Curriculum reviews can focus on the general (e.g. program aim and goals), or on the specific (e.g. individual course competencies), or both.



## How do we work?

At Melita Higher Education we take a uniquely open and collaborative approach. Combined with our proprietary methodology this ensures practical outcomes with a high degree of buy-in from both educators and students.

First we focus on gaining a clear understanding of the problem(s) and of the university's operating environment. We then discuss and develop together practical actions, which will contribute to the resolution of the problem(s).

A curriculum review consists of three phases:

1. Understanding needs, defining best practices and establishment of benchmarks for success.
2. A detailed audit consisting of data collection, analysis of current state and identification of desired state. Student, graduate and industry views on the curriculum form part of the audit.
3. Final analysis and review, recommendations and creating a framework for a plan of action.

## What outcomes can I expect?

By investing in a professional curriculum review process you will be better able to maintain a current and dynamic curriculum and improve communication and motivation among all faculty in the program, as well as between faculty and industry. A great curriculum means:

- Attracting the best students
- Higher performing students
- Better prepared graduates
- Improved graduate satisfaction
- Improved employer satisfaction
- Improved relationships between students and teaching staff
- Greater staff satisfaction with student progress
- An educational institution that is more responsive to the needs of its various publics





## Expert

Melita Higher Education is a division of the Melita Publishing Consultants Group (MPCG). Founded in 2010, Melita Higher Education uses the MPCG's connections with the scientific community to strengthen global science education.

For its curriculum review services, Melita Higher Education employs world-leading experts in the field of curriculum development and design as well as highly experienced project managers.

This approach guarantees world-class service for our institutional clients and the best possible outcomes for their programs.



## Collaborative

Our collaborative approach ensures a customized, bespoke outcome for your institute, based on its unique situation, resources and goals.

Organizing a review that is transparent and inclusive, has decided advantages. By charging departmental representatives with responsibility to do the background work required of the process, such as accessing existing data and curriculum information, as well as to determine the timelines, the process remains flexible to the needs of the institute and available resources.

A high level of inclusivity also inspires confidence in educators and students as well as offering reassurance how much is being invested in their future.

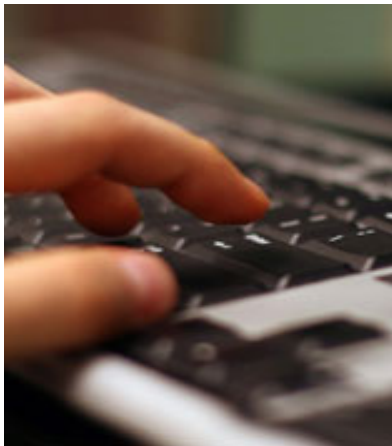


## Sustainable

At Melita Higher Education we are committed to ensuring that the institutes we work with become self-sufficient in the future. By the end of the review process, participants will have gained excellent experience in conducting evaluations.

We also provide all of the capabilities necessary to enable the institute to continue to evolve in the future such as:

- Copies of all the tools and methodologies used including questionnaires and audit data.
- Comprehensive curriculum and employability maps.
- A full final report including analysis, conclusions and recommendations for improvement.
- A practical implementation plan including associated timelines.
- Ongoing access to our specialist advisors and the Melita Higher Education wider community for further support and advice



## Interested in learning more?

Why not contact us for a no obligation discussion on how Melita Higher Education can meet your educational needs. We are happy to send one of our experts to your institute to explain how we work and answer your questions.

## Contact us

You can reach us at the contact information provided below

# Dr. Nello Spiteri

Senior International Consultant Education Solutions

Melita Higher Education

Buerweg 43  
1861 CH Bergen, The Netherlands

T: +31 72 743 1111 :: M: +31 6 18431799

E: [Nello@melitahighered.com](mailto:Nello@melitahighered.com)